



# Gangs Awareness



Making Your Community Safer



# Learning Objectives

- To understand what criminal activities are carried out by gangs.
- To understand the consequences of joining a gang or having any involvement with a gang.
- To understand the recruitment techniques used by gangs.
- To learn about support mechanisms for young people who have had involvement with gangs.





# What do we mean by the term 'Gangs'?





# Gangs or Co-offending groups:



Groups that carry out criminal acts together.

**This could range from:**

- **Theft / robbery**
- **Drug dealing and distribution**
- **Serious Youth Violence**
- **Weapon enabled crime**
- **Rape**
- **Murder**





# Why do people get involved in Gangs?



- Respect and status
- To gain friends
- Reputation
- To make money
- They were forced to, or felt there was no other alternative
- A sense of belonging
- Excitement
- Power
- Peer pressure
- A sense of identity
- To find a substitute family
- Safety and Protection
- They were recruited



**A sense of belonging is a powerful recruitment tool.**



**Especially for vulnerable people.**



# How is gang life made to look appealing to people?







# How is someone recruited into a gang?



- Young or vulnerable people will be targeted.
- The gang will pretend to be just a group of friends (normalising the behaviours).
- Money, drugs or 'gifts' will be given.



- Myths about excitement, power, money within gangs are told.
- You may find yourself in their debt (you owe the gang something).
- You may be forced into joining a gang.

## Gang Life-Junior Smart , ex gang member



The reality is that every time you're out there. You have to  
So it makes sense to make the right choice.  
exit.



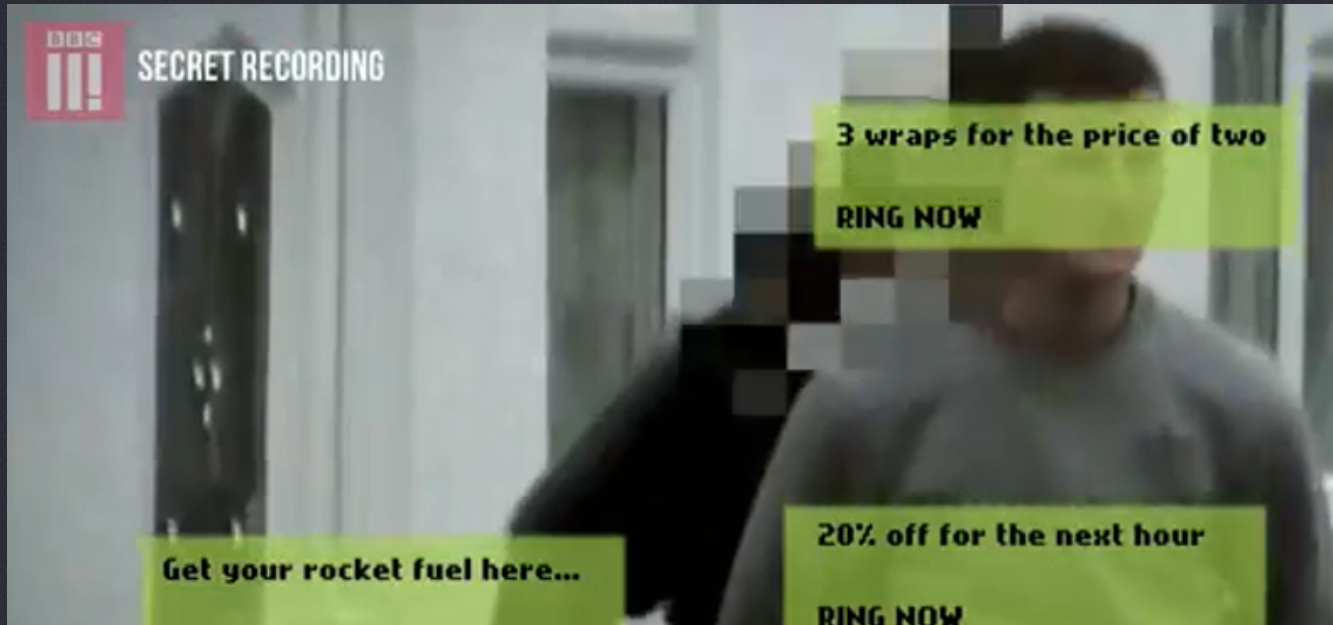
# County Lines



- **Movement of drugs from Urban / city areas to rural areas.**
- **Very young children are used as ‘drugs mules.’**
- **Drugs mules are given dedicated mobile phones (County Lines) to receive instructions for collection and distribution of drugs/ cash.**
- **Young people are trapped into this drug trafficking system by the elder gang members.**



## County Lines



When you make that phone call, it goes into a call  
And they will be able to provide us with numerous phone numbers  
And pass that information on to us.  
and they... .



# Class A Drugs



Crack cocaine (crystals or solid), cocaine (powder), ecstasy (MDMA), heroin, LSD, magic mushrooms, methadone, methamphetamine (crystal meth)

## The Law

### Possession

Up to 7 years in prison, an unlimited fine or both.

### Supply and Production

Up to life in prison, an unlimited fine or both.





# Class B Drugs



Amphetamines (Speed), barbiturates, cannabis, codeine, methylphenidate (Ritalin), synthetic cannabinoids (Spice), synthetic cathinones (e.g. mephedrone, methoxetamine), ketamine

## The Law

### Possession

Up to 5 years in prison, an unlimited fine or both

### Supply and production

Up to 14 years in prison, an unlimited fine or both







# Class C Drugs

Anabolic steroids, benzodiazepines (diazepam), gamma hydroxybutyrate (GHB), gamma-butyrolactone (GBL), piperazines (BZP), khat

## The Law

### Possession

Up to 2 years in prison, an unlimited fine or both

### Supply and Production

Up to 14 years in prison, an unlimited fine or both





# Temporary Class Drugs and Psychoactive Substances



The government can ban new drugs for 1 year under a 'temporary banning order' while they decide how the drugs should be classified.

## Temporary Class Drugs

- Police can take away a suspected temporary class drug
- Supply and production: Up to 14 years in prison, an unlimited fine or both.



## Psychoactive Substances

- Supply and production: Up to 7 years in prison, an unlimited fine or both.





**Gangs prey on some of the weakest most vulnerable members of society.**



## **Cuckooing**



**Is this brave or glamorous?**





# Life in Gang



- You may be required to prepare, move or deal drugs.
- You could be required to carry out very violent acts against others.
- You will be under constant threat of violence yourself.
- You could be at risk of sexual violence (this is true for boys and girls).
- You will be trapped in lifestyle that is very difficult to leave.
- You have a very strong chance of ending up in prison or dead.



# Money Mules



**Using young persons bank/savings account to make illegally obtained money, legal.**

# Girls in Gangs

- **Involvement tends to be more relationship based.**
- **Can be asked to hide drugs or weapons.**
- **Can be asked to rob or steal for the gang.**
- **Can be made to carry out 'sexual favours' for the gang.**
- **Are at a very strong risk of emotional, physical abuse and sexual violence.**



## Girls in Gangs



Becky is one of a number of gang girls who use the Community  
I'm used to take drugs from London to Birmingham, Yorkshire,  
Suddenly you You And so there is then no way out.  
perpetrator.



# Some Gang Myths



**You are part of a gang 'family'.**



**Being in a gang is exciting.**



**You will have lots of money and 'stuff'.**





# Custodial Sentence

What is life like in a Young Offenders Institute or Prison?



Making Your Community Safer



## Is someone in a gang? (What could be the signs)

Staying out unusually late or not coming home at all.

Distancing from one or both parents/ caregivers.

Interest in music which glorifies weapons/ gang culture.

Poor school results or skipping school altogether.

Carrying weapons.

Changes or adapting their dress style.

Money, clothes or accessories which they are unable to account for.

Talking differently – new slang or language with an aggressive tone.

Changes in behaviour, becoming fearful and/or withdrawn.

Abusing drugs and/or alcohol.

Being involved in fights or disorder – especially if this is outside the local area.

Being stopped in relation to drugs – especially if this is outside local area.



## What can you do. (If someone is trying to groom you / bring you into a gang).



- Tell someone: Parent, teacher, police, friend, other agency (e.g: childline).
- Remove yourself from the situation as quickly as possible.
- Be wary of people being 'too friendly' or wanting to give you things.
- If you think someone else (perhaps a friend) is being groomed by a gang, report this to: Police, childline, NSPCC etc). Or tell someone you trust, Parent, teacher, responsible adult.



## Remember.....

- All a gang wants to do is exploit you and make money from you.
- They are not your 'family' or friends.
- Gangs target vulnerable / young people (those who are bullied, isolated, lonely, troubled, **Lost**).
- Being part of a gang will only make your life / troubles worse.



# Useful Contacts



<https://www.fearless.org/en>





# Useful Contacts



<https://www.youandco.org.uk/>



0808 808 4994



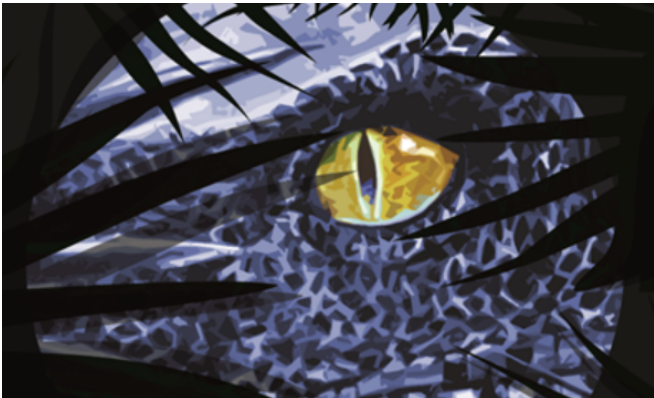
0800 032 9538 or 07753 351 256.



020 7708 8000



# OPERATION **RAPTOR**



## **ESSEX POLICE**



**Thanks for listening.**



**Making Your Community Safer**